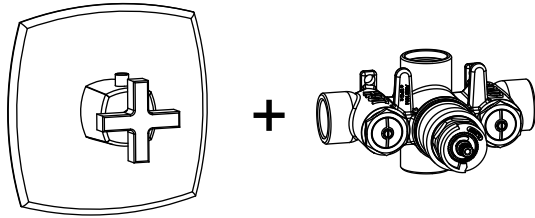


SER.4201 | Thermostatic Mixer Valve with Trim - 3/4"

SPECIFICATIONS:

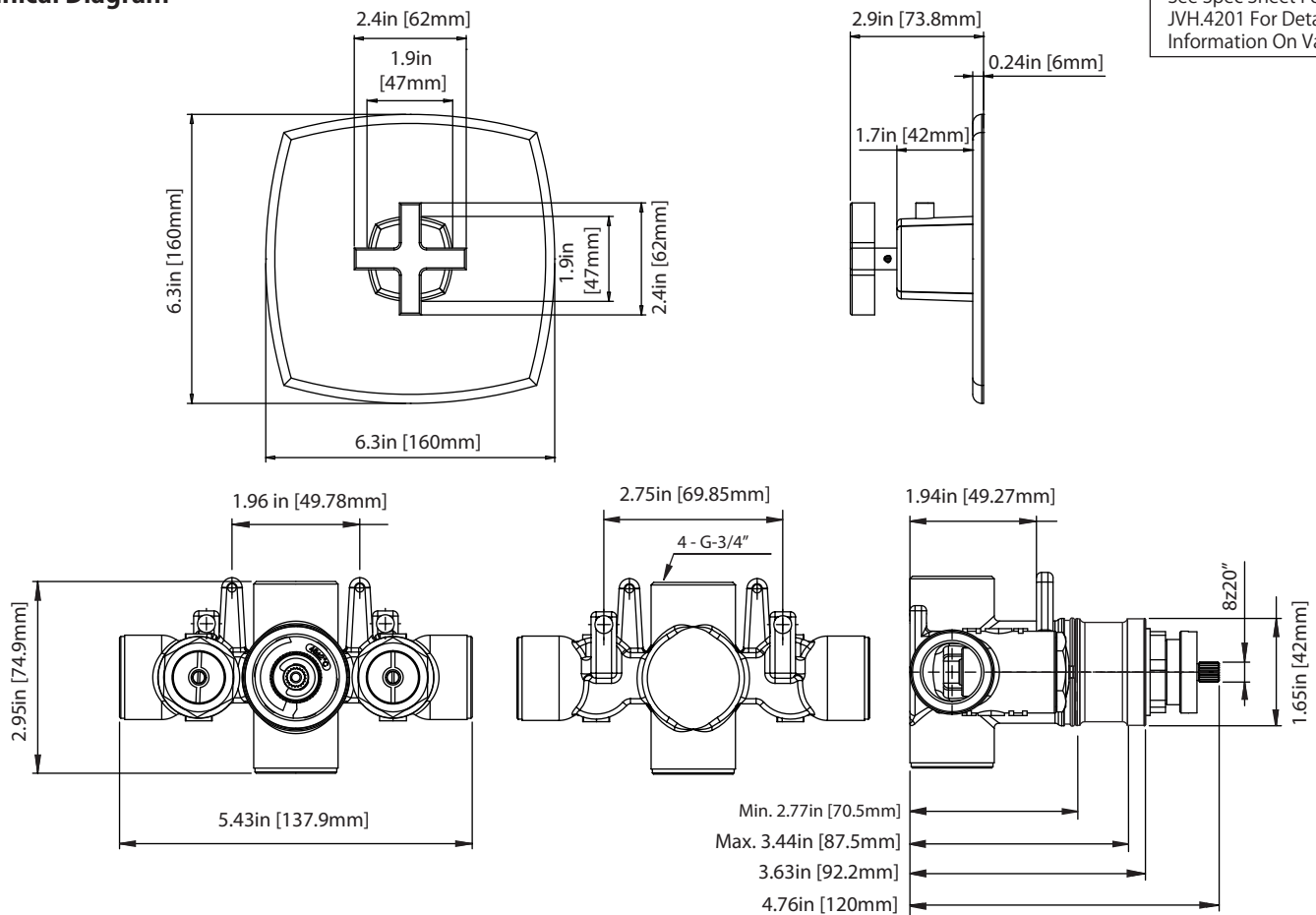


Trim
[SER.4201T**]

Valve
[JVH.4201]

- Turn Handle to control temperature.
- Includes Thermostatic valve (JVH.4201) w/ service stops
- Thermostatic Valve Flow Rate - 36 LPM @ 3 BAR
- Extension Available - JVH.E185E**

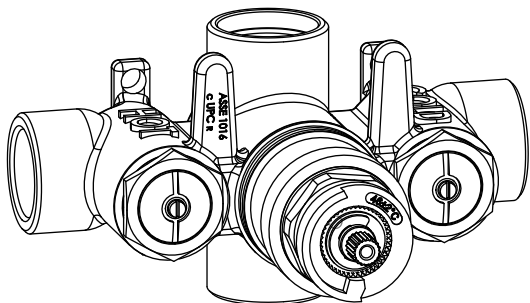
Technical Diagram



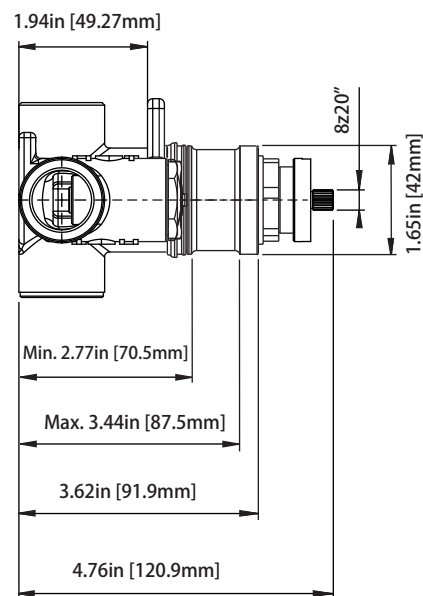
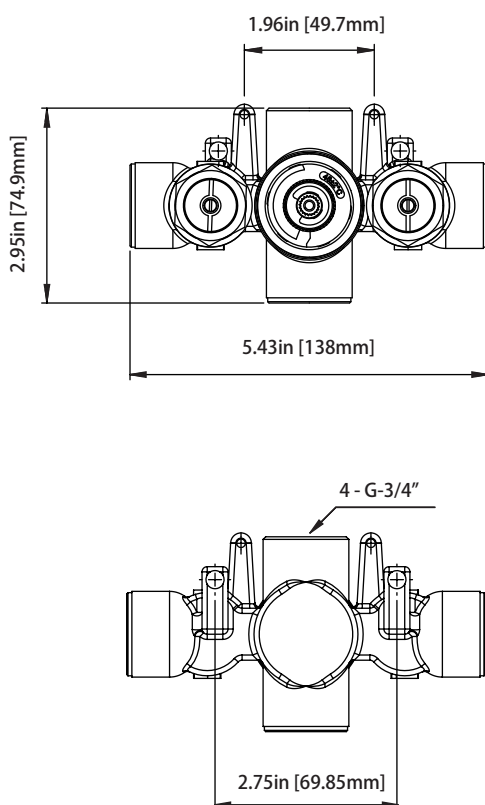
JVH.4201 | 3/4" Thermostatic Mixer Valve Page 1 of 2

SPECIFICATIONS:

- Turn knob to control temperature.
- Thermostatic Valve Flow Rate - 36 LPM @ 3 BAR



Technical Diagram



JVH.4201 | 3/4" Thermostatic Mixer Valve Page 2 of 2

Water Flow Diagram

