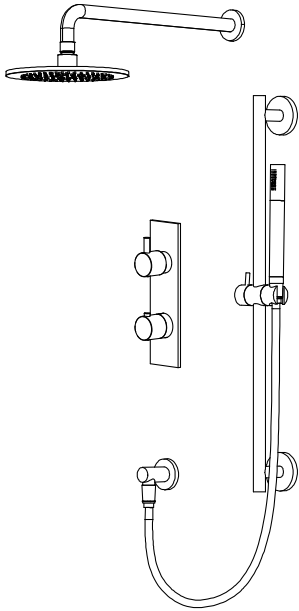


## ORO.7300 | Two Output Shower W/ Rain Shower, Hand Shower & Slide Bar



### COMPONENTS

- HH1012SA - 16" Shower Arm
- HH1002A - 8" Shower Head
- ORO.4000VT - Shower Trim
- JVH.2717F - Shower Valve
- HH1004H - Hand Shower
- ORO.5502 - Wall Elbow
- HH.150EM - 1.5m Hose
- ORO.601001A - Slide Bar

### SHOWER VALVE:

- Thermostatic shower valve
- Valve includes service stops
- Turn bottom handle to set temp.
- Top handle controls water diversion
- Includes 15109 non-shared cartridge

### SHOWER HEAD:

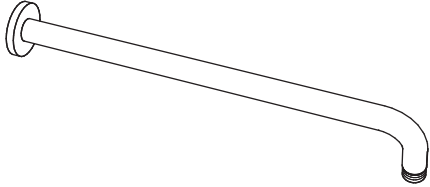
- Solid brass construction
- 11 LPM flow rate

### HAND SHOWER:

- Solid Brass construction
- 6 LPM flow rate
- 1/2" male connection
- With back flow prevention check valve

See individual component specification sheets on following pages for further details.

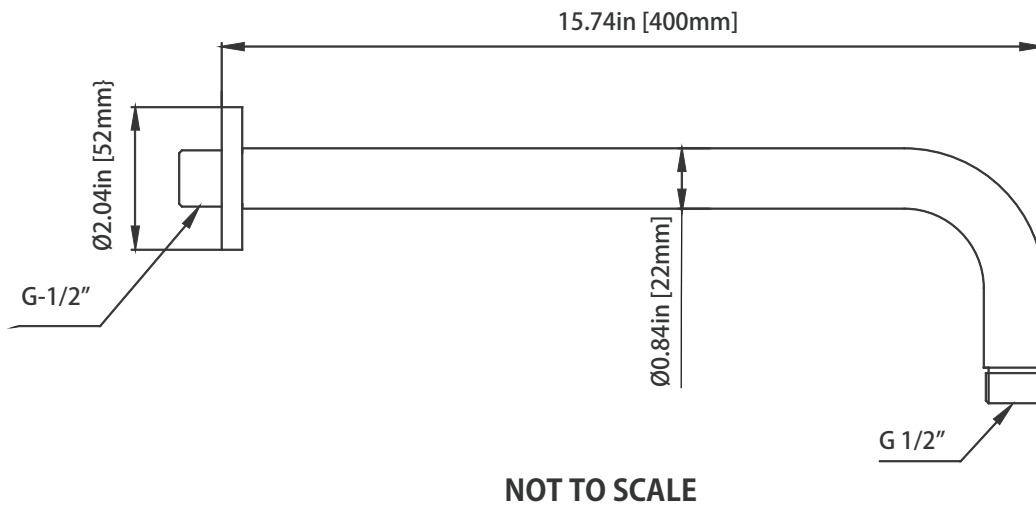
HH1012SA | Round Shower Arm - 400mm - 16"



**SPECIFICATIONS:**

- Solid Brass Shower Arm
- With Sliding Flange

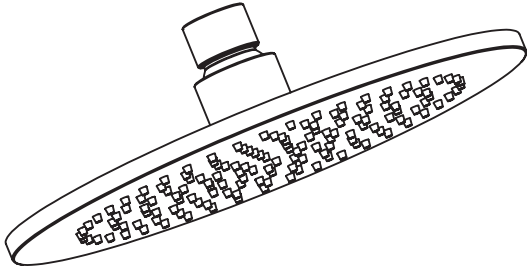
**Technical Diagram**



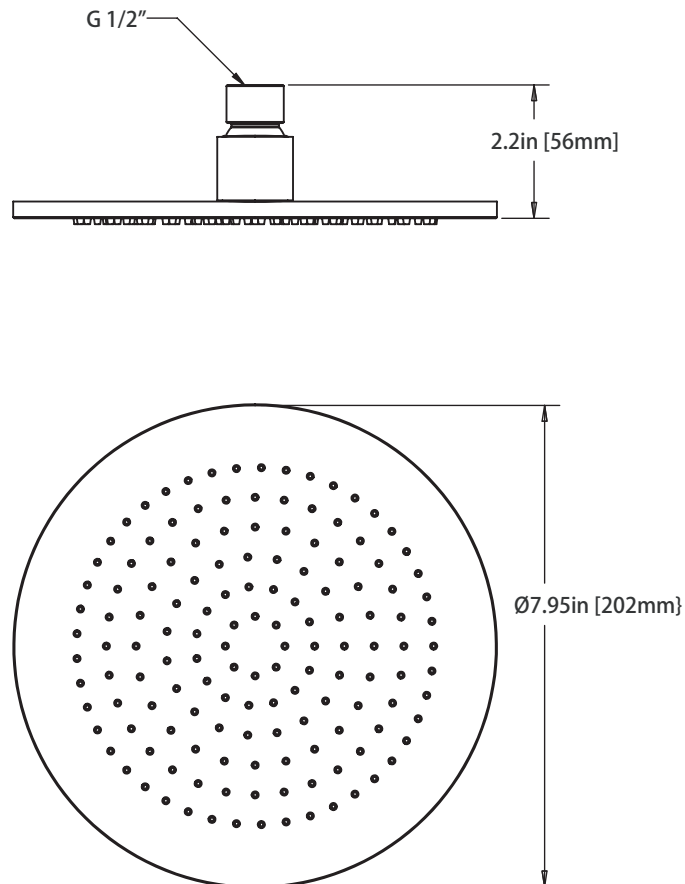
HH1002A | 8" Brass Rain Shower

SPECIFICATIONS:

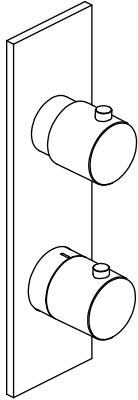
- Solid Brass Shower Head
- Scrub rubber nozzles to easily clean water sediment
- 11 PM Flow Rate



Technical Diagram



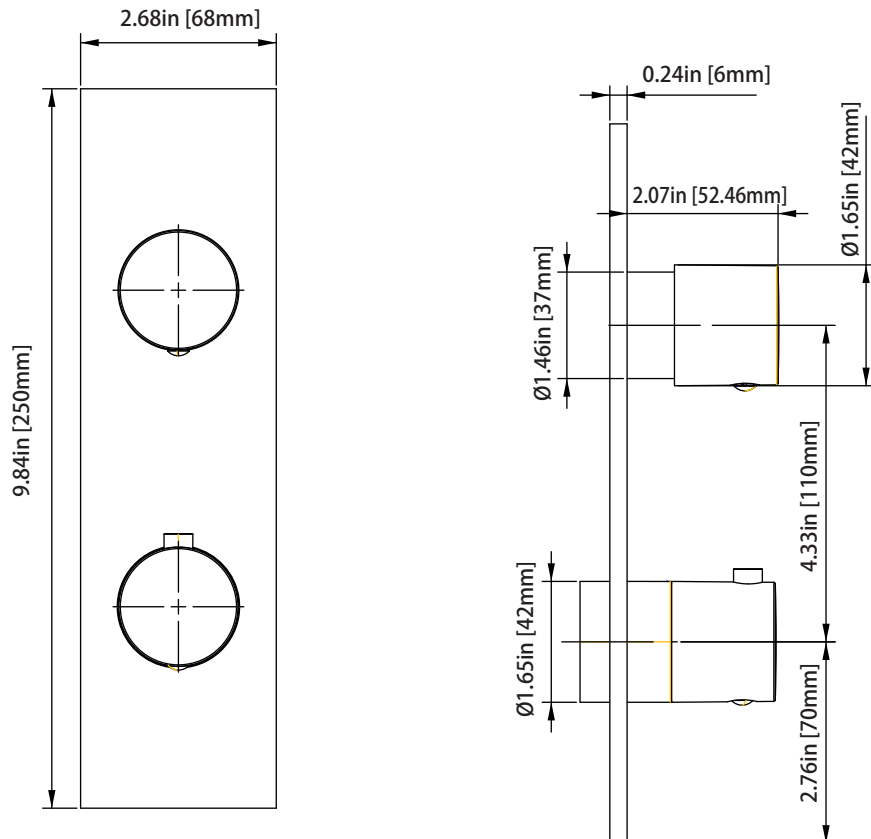
ORO.4000VT | Thermostatic Shower Trim



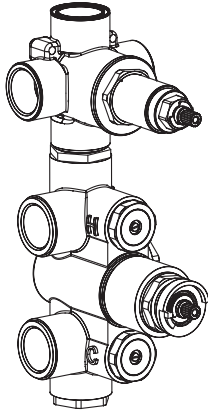
SPECIFICATIONS:

- Solid Brass Construction
- Trim Only - Valve Not Included
- Turn bottom handle to control temperature
- Turn top handle to control volume

Technical Diagram



JVH.2717F | 3/4" Thermostatic Mixer Valve - 2 Output Page 1 of 2

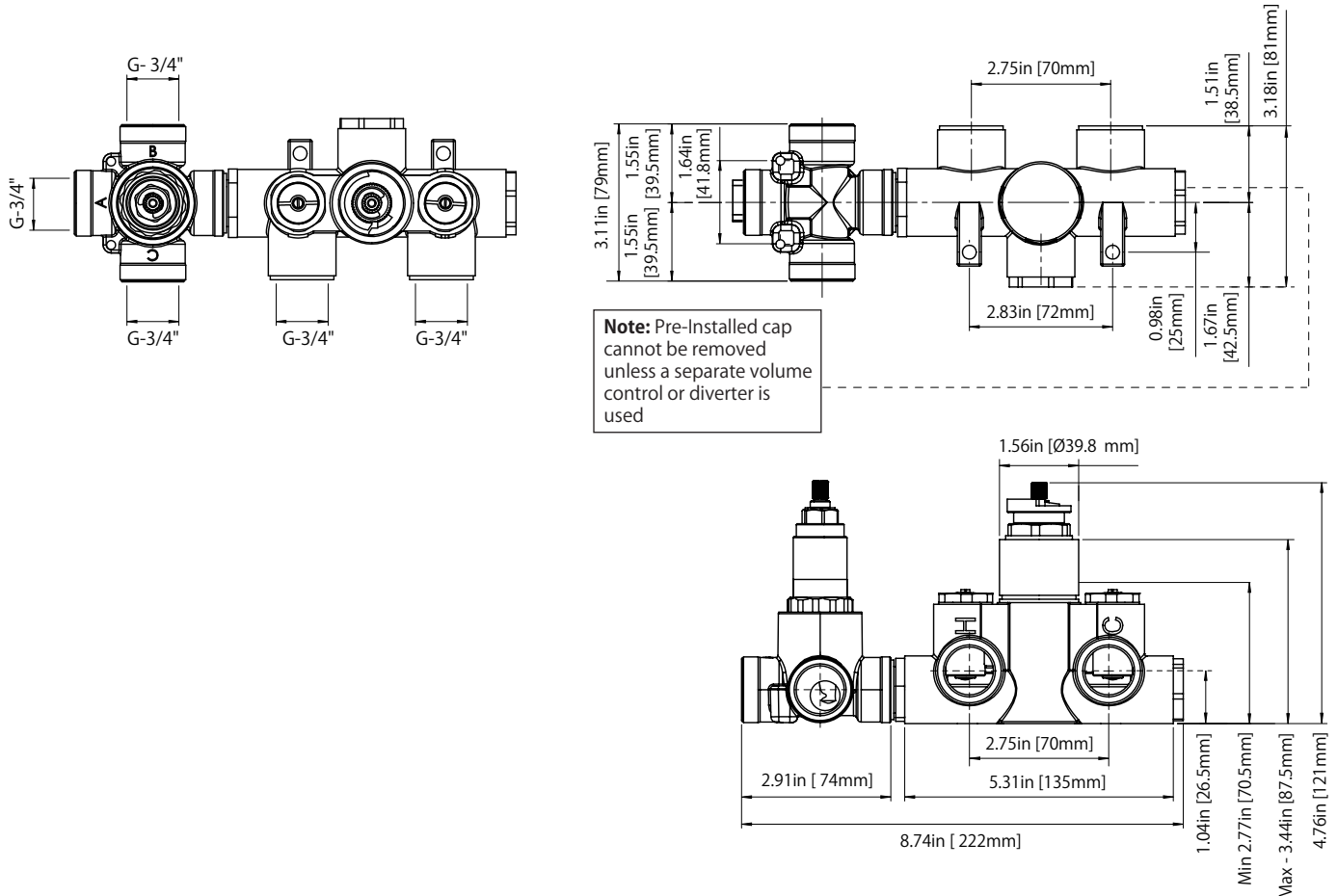


**SPECIFICATIONS:**

- Turn bottom knob to control temperature.
- Turn top knob to control water flow.
- Thermostatic Valve Flow Rate - 22 LPM @ 3 BAR
- Extension Available - JVH.4101E\*\*

**!** A separate volume control is **not** needed to turn water supply off. Volume control functionality is integrated within this valve.

**Technical Diagram**



---

**JVH.2717F | 3/4" Thermostatic Mixer Valve - 2 Output** Page 2 of 2

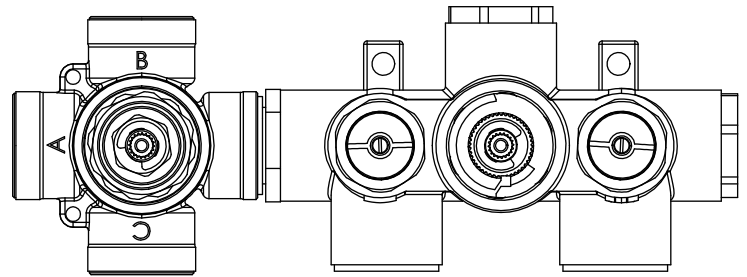
**THREE OUTPUT - NO SHARED PORT OPERATION**

---

Diverter Cartridge # - **15100** (Included)

Total 6 Positions as defined below, with **only** 1 port active at one time.

- Position 0 - Off - No Water Flow
- Position 1 - Output B Activated
- Position 2 - Off - No Water Flow
- Position 3 - Output A Activated
- Position 4 - Off - No Water Flow
- Position 5 - Output C Activated



**THREE OUTPUT - SHARED PORT OPERATION**

---

Diverter Cartridge # - **15200** (Not Included)

Total 6 Positions as defined below, with 2 ports active at one time.

- Position 0 - Off - No Water Flow
- Position 1 - Output B Activated
- Position 2 - Output B+A Activated
- Position 3 - Output A Activated
- Position 4 - Output C+A Activated
- Position 5 - Output C Activated

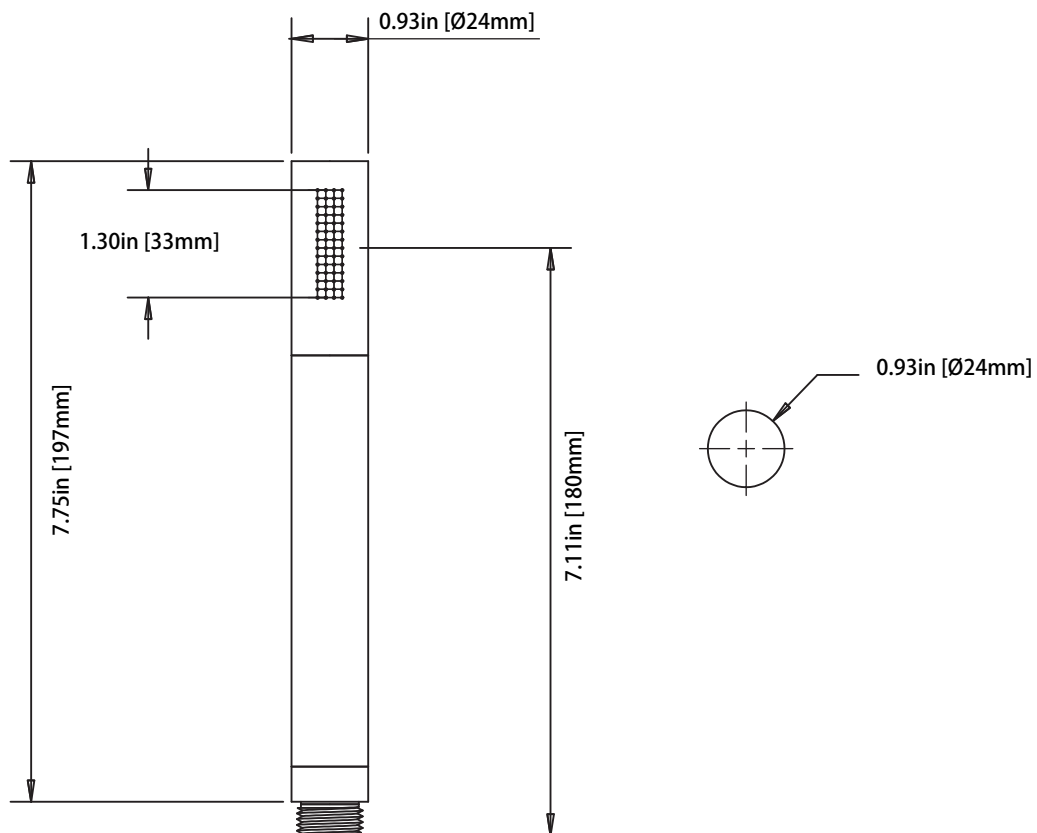
HH1004H | Solid Round Brass Hand Shower

SPECIFICATIONS:

- Solid Brass Construction
- 6 LPM Flow Rate @ 3 BAR
- With back flow prevention check valve



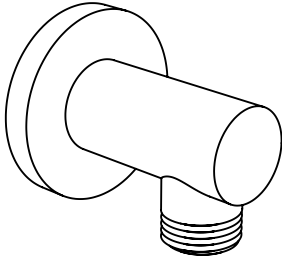
Technical Diagram



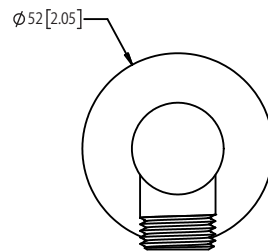
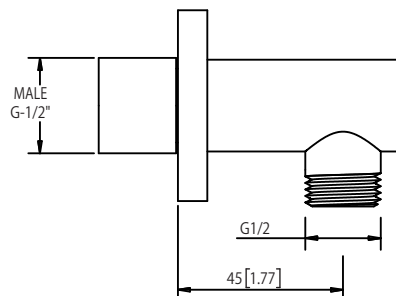
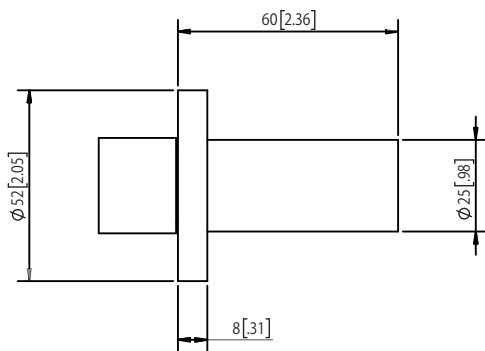
**ORO.5502 | Wall Elbow Outlet**

**SPECIFICATIONS:**

- Solid Brass construction
- 1/2" male connection with adjustment
- Includes check valve with back-flow prevention



**Technical Diagram**





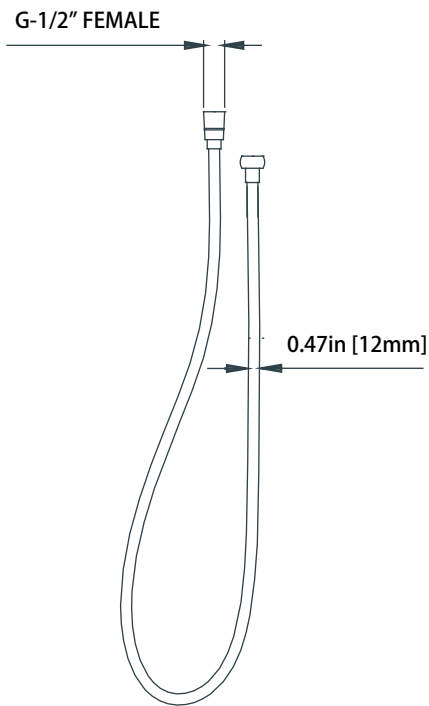
HH.150EM | Easy Maneuver Hose



SPECIFICATIONS:

- Stainless steel construction
- G-1/2" connection
- 1.5m length

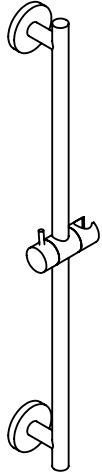
Technical Diagram



ORO.601001A | Slide Bar

SPECIFICATIONS:

- Solid Brass Construction
- Easy front of wall installation



Technical Diagram

