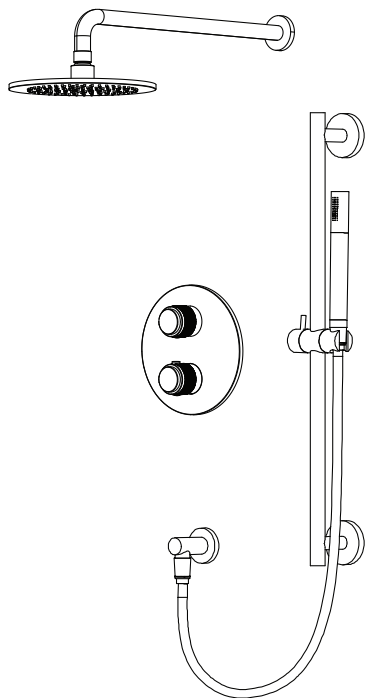


FRG.7100 | Two Output Shower W/ Rain Shower , Hand Shower & Slide Bar



COMPONENTS

- HH1012SA - 16" Shower Arm
- HH1002A - 8" Shower Head
- FRG.4000T - Shower Trim
- JVH.4420F - Shower Valve
- HJ1004H - Hand Shower
- ORO.5502 - Wall Elbow
- HH.150EM - 1.5m Hose
- ORO.601001A - Slide Bar

SHOWER VALVE:

- Thermostatic shower valve
- Valve includes service stops
- Turn bottom handle to set temp.
- Top handle controls water diversion
- Includes 15109 non-shared cartridge

SHOWER HEAD:

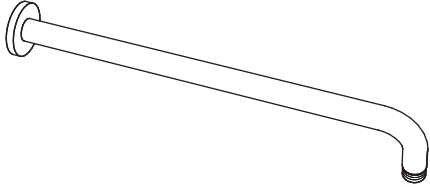
- Solid brass construction
- 11 GPM flow rate

HAND SHOWER W/ SLIDE BAR & ELBOW:

- Solid Brass construction
- Hand shower flow rate = 6 LPM
- G-1/2" male elbow connection
- With back flow prevention check valve

See individual component specification sheets on following pages for further details.

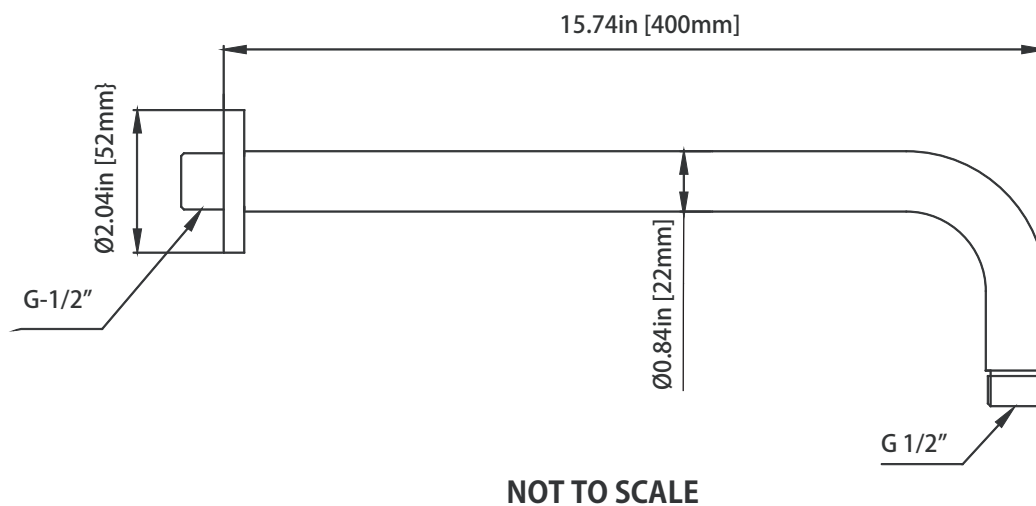
HH1012SA | Round Shower Arm - 400mm - 16"



SPECIFICATIONS:

- Solid Brass Shower Arm
With Sliding Flange

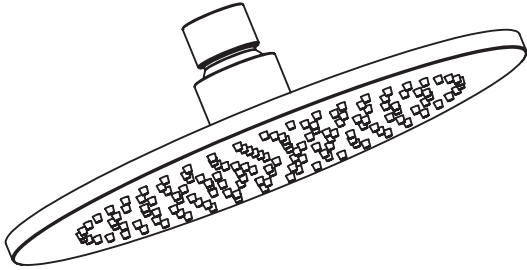
Technical Diagram



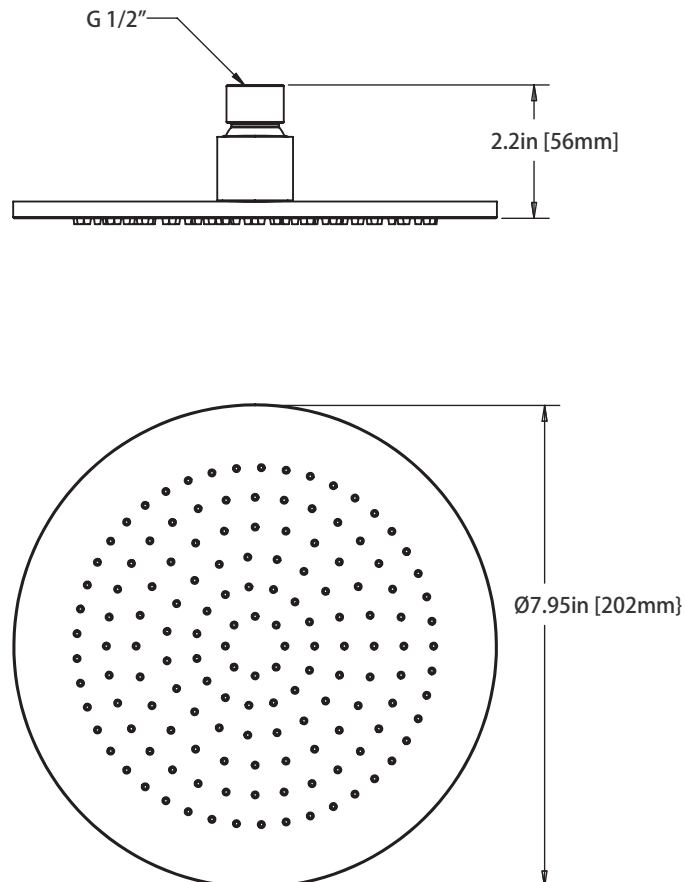
HH1002A | 8" Brass Rain Shower

SPECIFICATIONS:

- Solid Brass Shower Head
- Scrub rubber nozzles to easily clean water sediment
- 11 PM Flow Rate



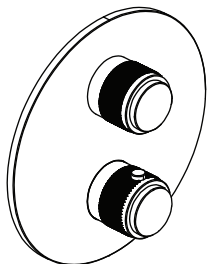
Technical Diagram



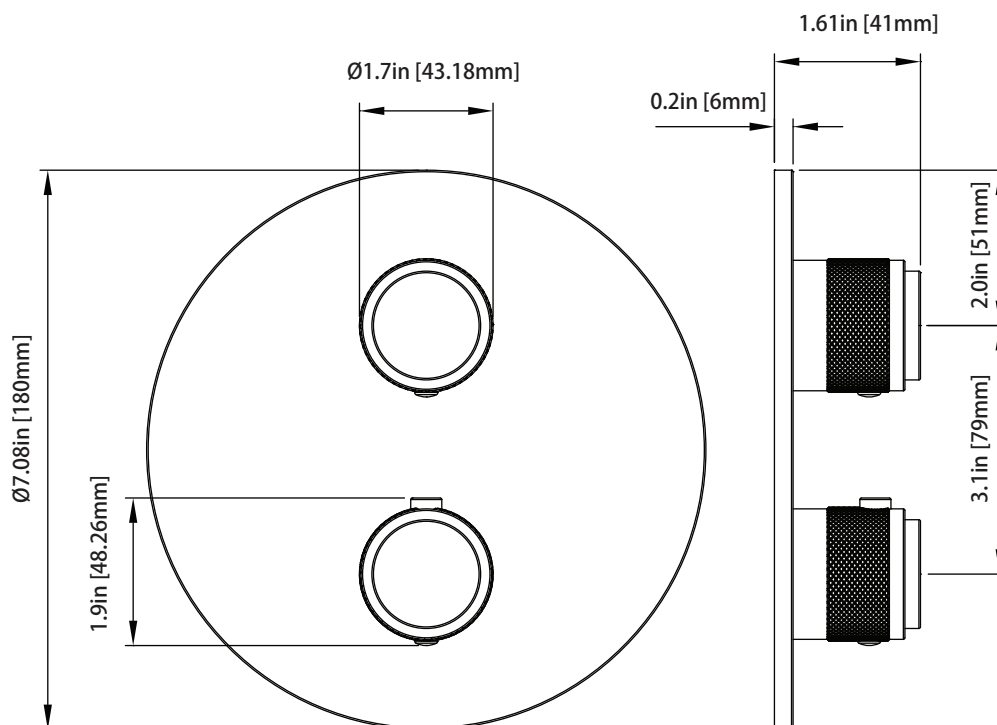
FRG.4000T | Thermostatic Shower Trim

SPECIFICATIONS:

- Solid Brass construction
- Valve not included - trim only
- Turn bottom handle to control temperature.
- Turn top handle to divert water & control volume



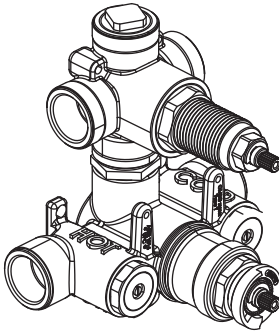
Technical Diagram



JVH.4420F | 3/4" Thermostatic Mixer Valve - 2 Output Page 1 of 2

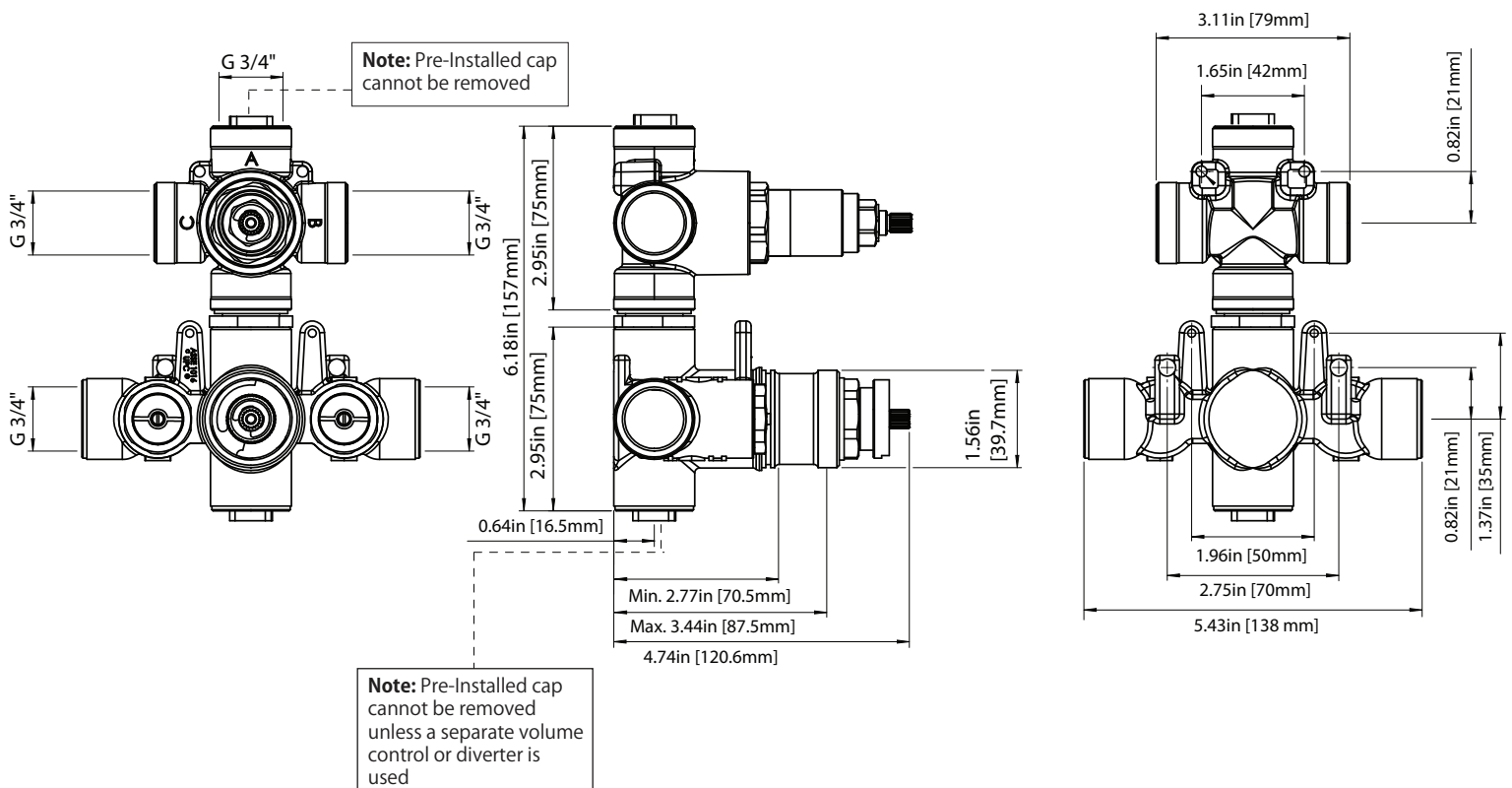
SPECIFICATIONS:

- Turn bottom knob to control temperature.
- Turn top knob to control water flow.
- Thermostatic Valve Flow Rate - 22 LPM @ 3 BAR
- Extension Available - JVH.4101E**



! A separate volume control is **not** needed to turn water supply off. Volume control functionality is integrated within this valve.

Technical Diagram



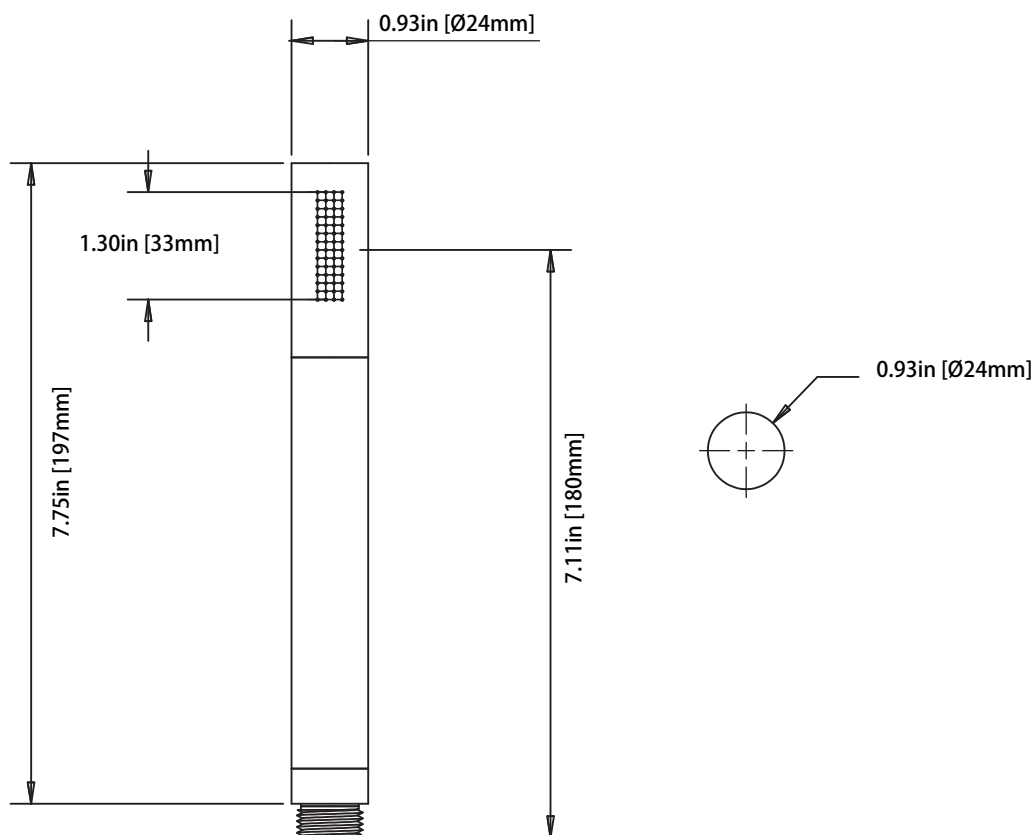
HH1004H | Solid Round Brass Hand Shower

SPECIFICATIONS:

- Solid Brass Construction
- 6 LPM Flow Rate @ 3 BAR
- With back flow prevention check valve



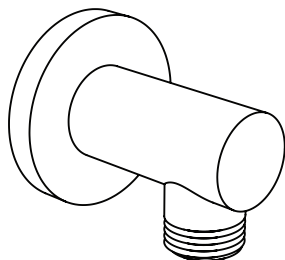
Technical Diagram



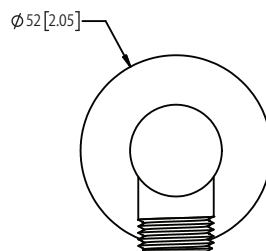
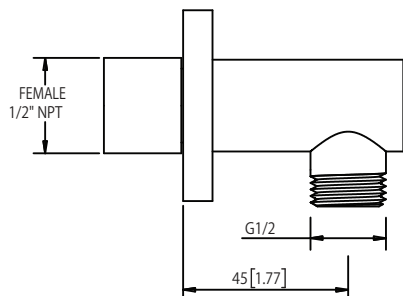
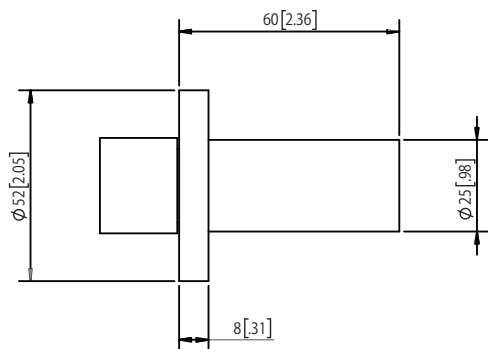
ORO.5502 | Wall Elbow

SPECIFICATIONS:

- Solid Brass construction
- 1/2" male connection with adjustment
- Includes check valve with back-flow prevention



Technical Diagram



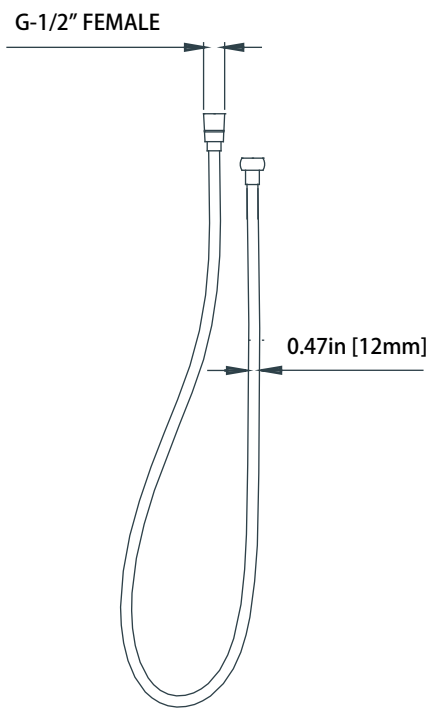
HH.150EM | Easy Maneuver Hose



SPECIFICATIONS:

- Stainless steel construction
- G-1/2" connection
- 1.5m length

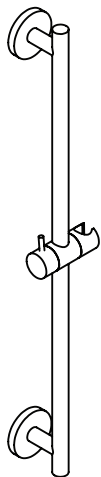
Technical Diagram



ORO.601001A | Slide Bar

SPECIFICATIONS:

- Solid Brass Construction
- Easy front of wall installation



Technical Diagram

